





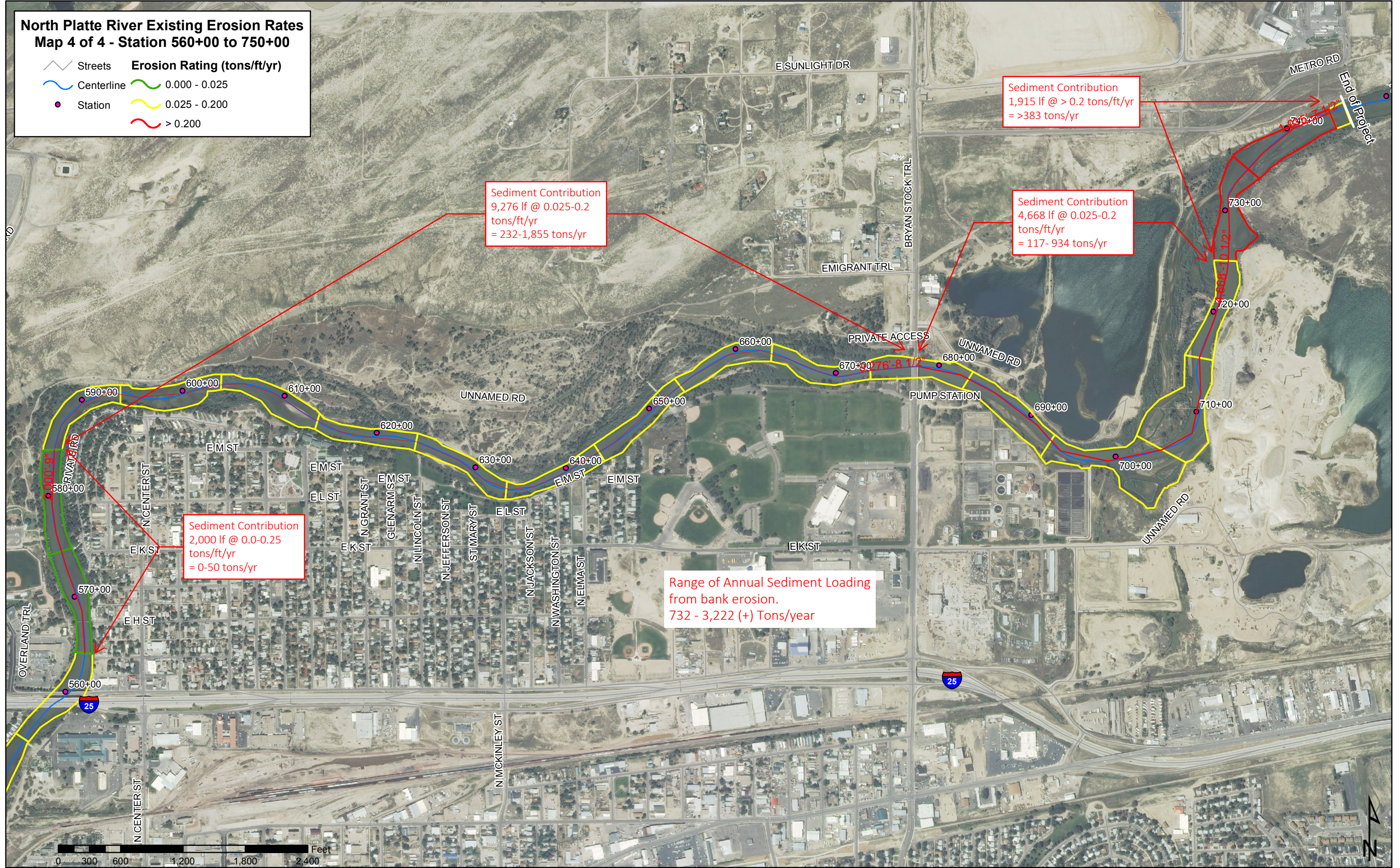


**North Platte River Existing Erosion Rates**  
**Map 4 of 4 - Station 560+00 to 750+00**

-  Streets
-  Centerline
-  Station
-  Erosion Rating (tons/ft/yr) 0.000 - 0.025
-  0.025 - 0.200
-  > 0.200



Sediment Contribution  
 9,276 lf @ 0.025-0.2  
 tons/ft/yr  
 = 232-1,855 tons/yr

Sediment Contribution  
 1,915 lf @ > 0.2 tons/ft/yr  
 => 383 tons/yr

Sediment Contribution  
 4,668 lf @ 0.025-0.2  
 tons/ft/yr  
 = 117- 934 tons/yr

Sediment Contribution  
 2,000 lf @ 0.0-0.25  
 tons/ft/yr  
 = 0-50 tons/yr

Range of Annual Sediment Loading  
 from bank erosion.  
 732 - 3,222 (+) Tons/year

0 300 600 1,200 1,800 2,400 Feet

